



- INSPIRATION GUIDE FOR BLACKSMITHS AND METAL FABRICATORS

BYG: 5 STEPS TO BUILD YOUR GRATING

1

Choose the B-CUBE® W500

2

Insert reinforcements and edging bars

3

Weld single panels together

4

Cut-out and weld

5

Ready to install

BYG: 5 STEPS TO BUILD YOUR GRATING



1

Choose the B-CUBE® W500

2

Insert reinforcements and edging bars

3

Weld single panels together

4

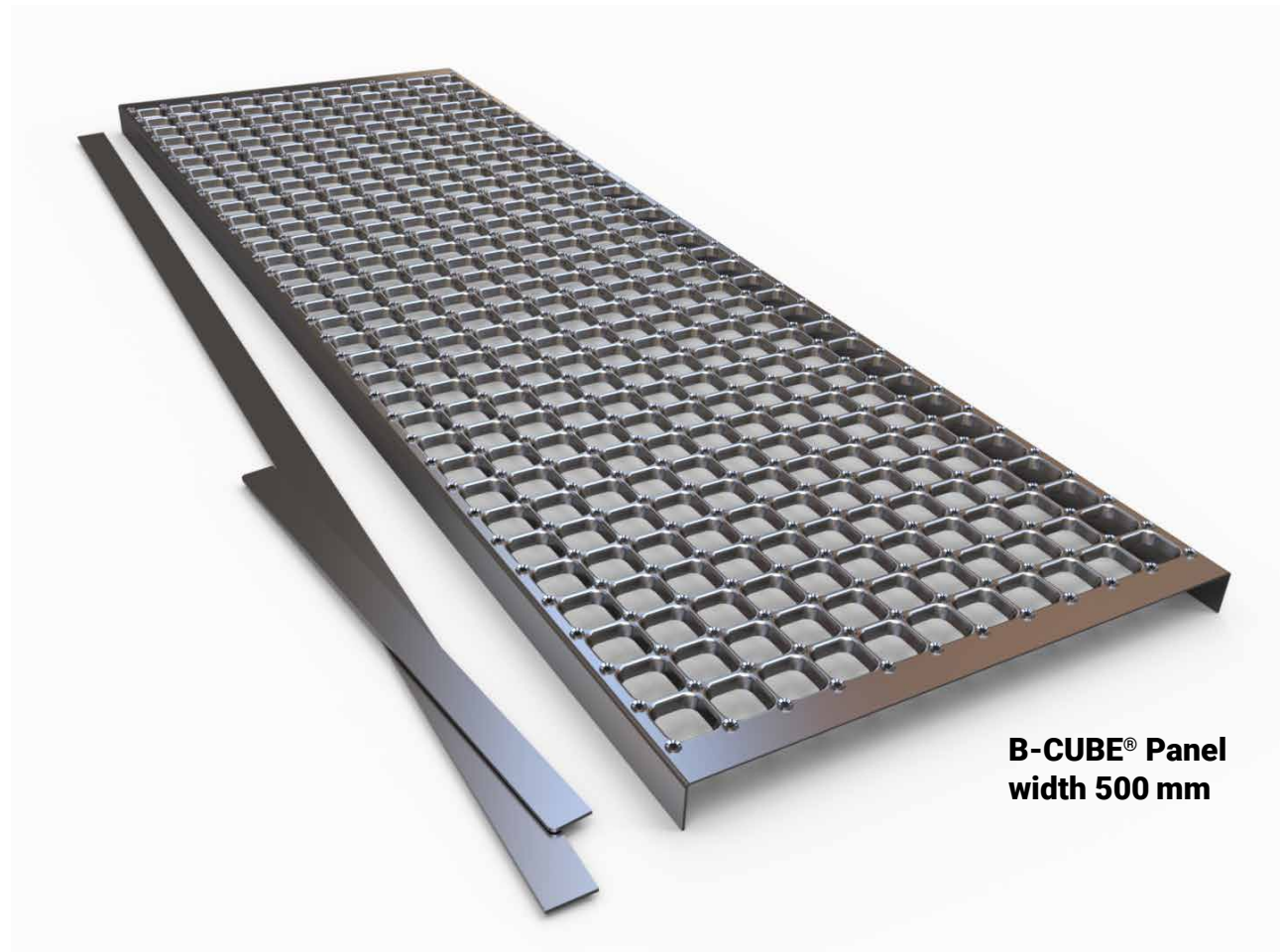
Cut-out and weld

5

Ready to install

Choose the B-CUBE® W500!

All you need to get started is the CUBE® grating panel and some flat bars, a welding machine and some experience in tack welding.



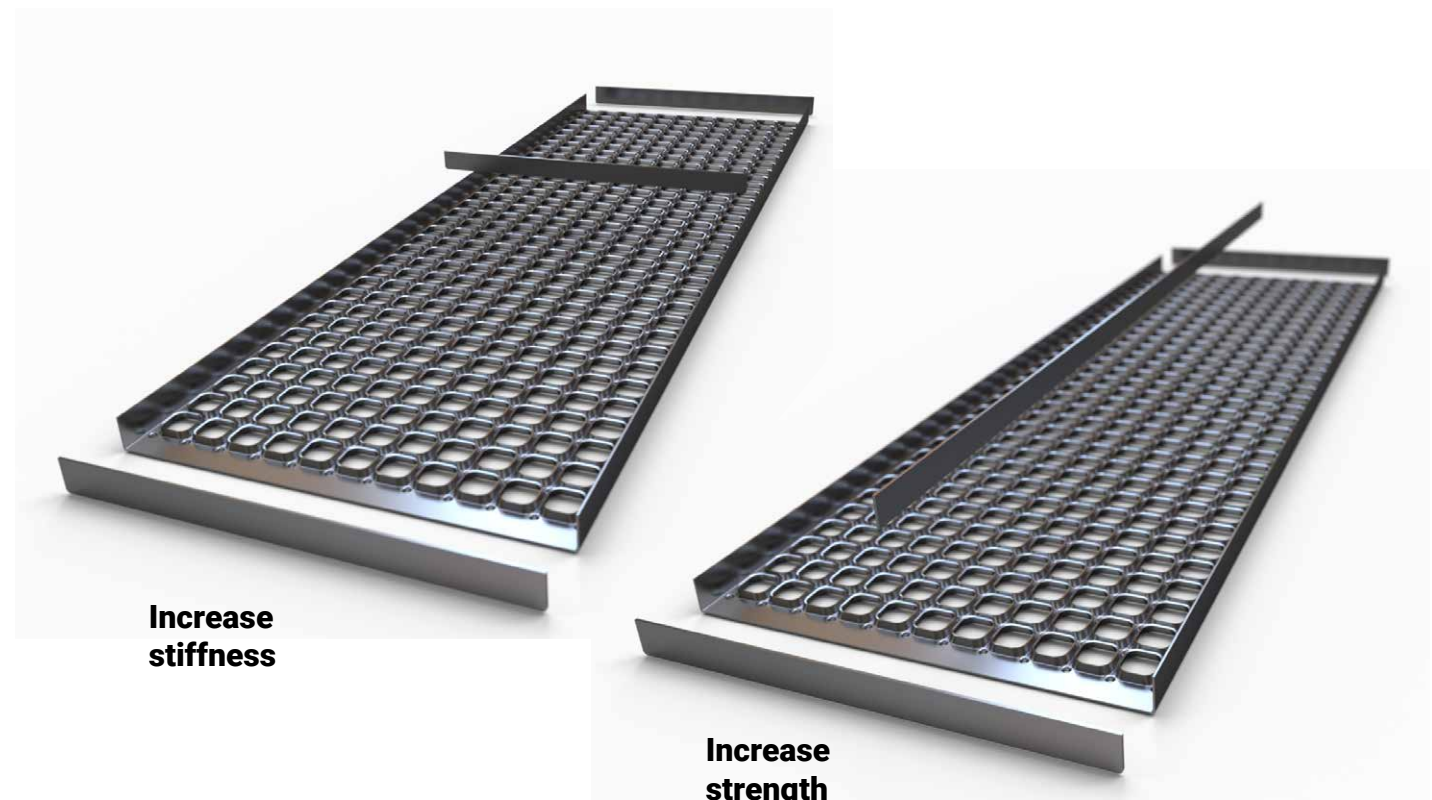
B-CUBE® Panel width 500 mm

- 1 Choose the B-CUBE® W500
- 2 Insert reinforcements and edging bars
- 3 Weld single panels together
- 4 Cut-out and weld
- 5 Ready to install

Insert reinforcements and edging bars

Tack weld the edging bars to the ends and simply insert the flat bars into the U-formed profiles on the backside of the CUBE® to reinforce the grating or stiffen the top flange, and tack weld the flat bar to the CUBE® for every 500 mm.

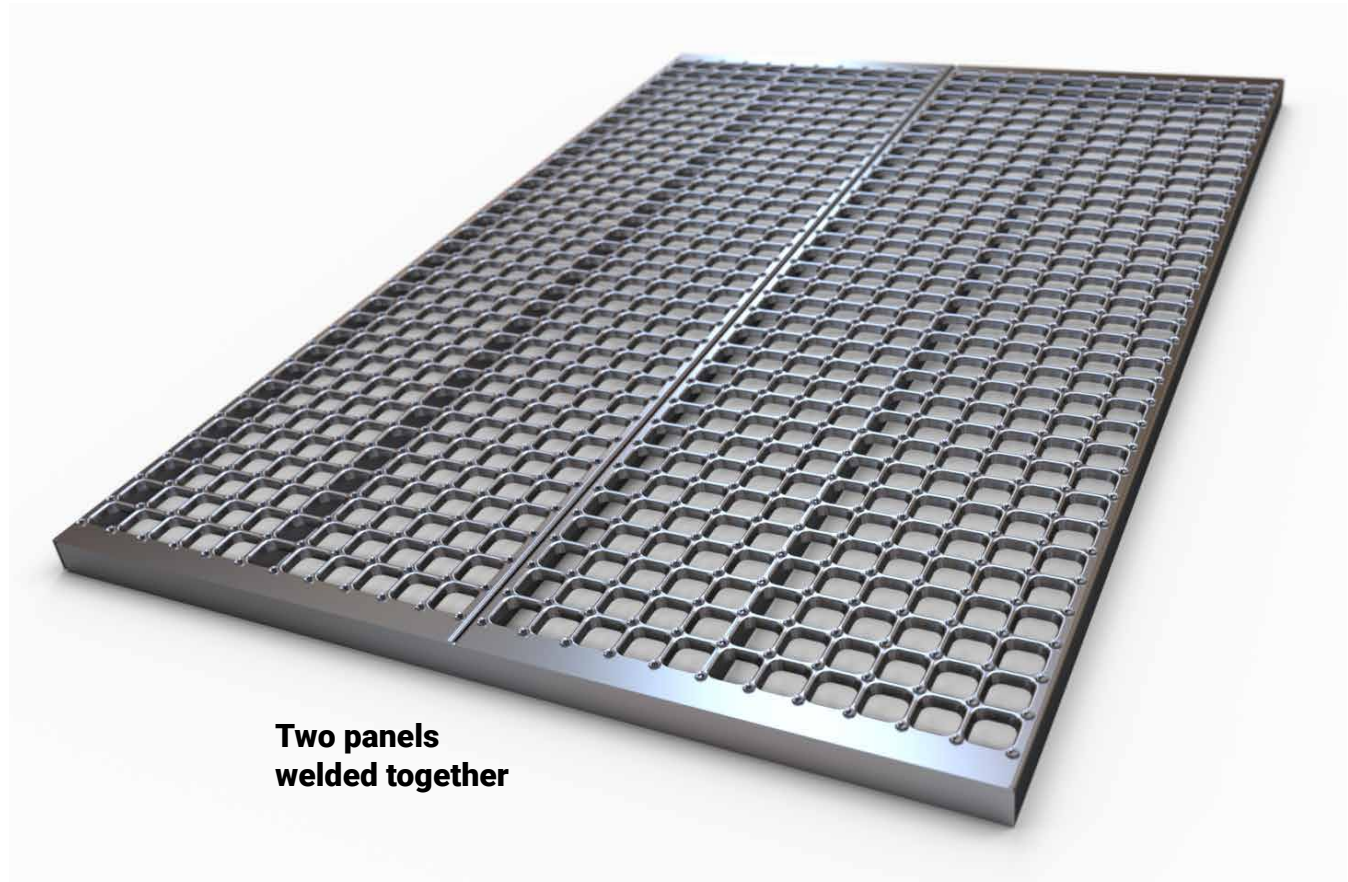
Request reinforcements and welding guidance at your nearest PcP. office.



- 1 Choose the B-CUBE® W500
- 2 Insert reinforcements and edging bars
- 3 Weld single panels together
- 4 Cut-out and weld
- 5 Ready to install

Weld single panels together

You can weld multiple panels together to form larger gratings, simply by tack welding for every 500 mm on the backside.



Two panels welded together

BYG: 5 STEPS TO BUILD YOUR GRATING

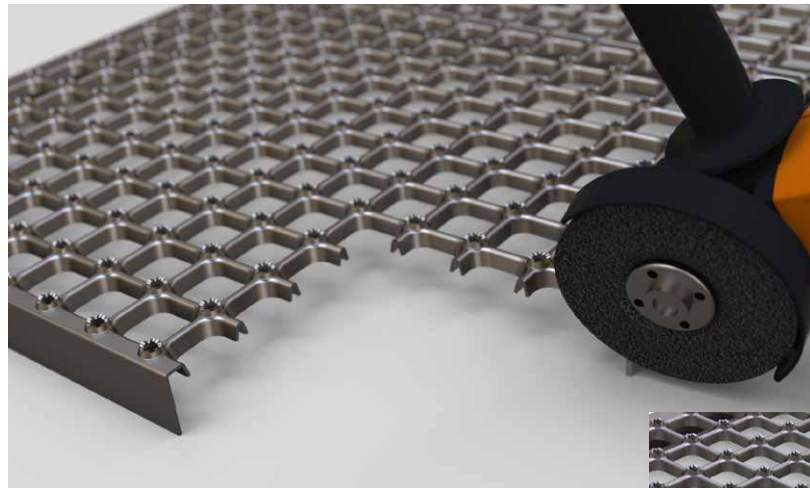


- 1 Choose the B-CUBE® W500
- 2 Insert reinforcements and edging bars
- 3 Weld single panels together
- 4** Cut-out and weld
- 5 Ready to install

Cut-out and weld

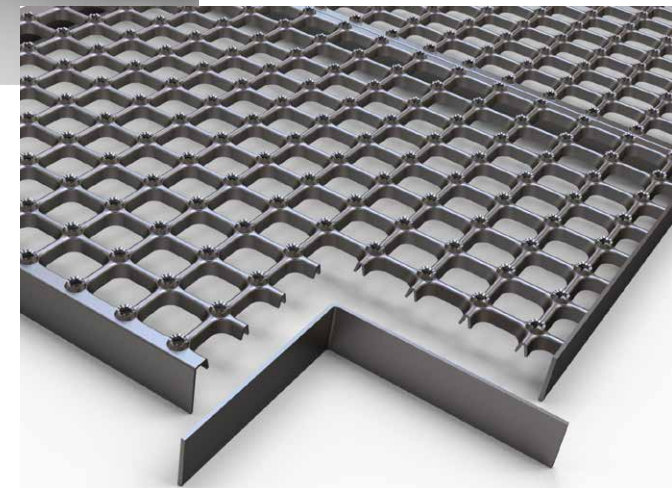
Make cut-outs using a grinder and finish by tack welding edging bars to adapt the grating to the application.

The CUBE® grating works as a fully press-welded grating because it is manufactured of one sheet of metal.



Use grinder to cut

Tack weld edging bars



BYG: 5 STEPS TO BUILD YOUR GRATING



- 1** Choose the B-CUBE® W500
- 2** Insert reinforcements and edging bars
- 3** Weld single panels together
- 4** Cut-out and weld
- 5** Ready to install

Ready to install

You are now ready to proceed with the desired surface treatment and, finally, install the fully customised grating on the structural layout.

